

## The Linière Grégoire House

Linière Grégoire, from Saint-Janvier, arrived in Saint-Jovite<sup>1</sup> in 1892. In this house, he lived with his family as well as setting up the village's first tinsmith operation. There was ample work. From creation to repair, the work was done by hand, without electricity. A wide range of utensils was made here including milk pans, cups, pots and pans, dustpans and more.

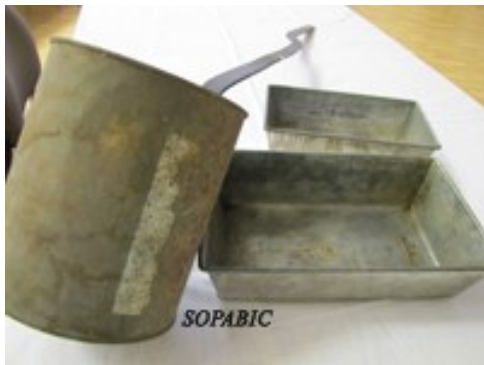
Tin goods were mostly fabricated in the fall and winter, while spring and summer were spent touring villages from Montreal to Rapide-de-l'Original (now Mont-Laurier) to sell the products.

Early in the 20th century, the municipal council met above the tinsmith's shop. The space for the attending public was set up with rustic benches made of planks nailed to lengths of log.

Mail came through this house, as well, because Linière Grégoire held the position of postmaster for 27 years.

Research and writing: Société du Patrimoine SOPABIC, heritage society

Translation: Anne Johnston



Legend: Items made of tinplate including, on the right, a milk pan.

Source: *photo from Colette Légaré*

---

<sup>1</sup> Saint-Jovite is the name of one of the former municipalities which merged to form what is today the Ville de Mont-Tremblant